

**LUXURIOUS PROJECT IN BAHCELIEVLER / ISTANBUL**

**\$610,000**

**Lot No:** en9069

**Bedrooms:** 2

**Area (m2):** 133

**Bathrooms:** 2

**Land Area (m2):** 42000

**Balconies:** 1

**Number of Rooms:** 1

**Floor:** 11

**Property Features;**

Balcony	Parking	Swimming Pool
Smart House	Park	Sauna
Elevator	Availble For Citizenship	

**Description;**

An excellent family residential project located in the Bahçelievler area, directly opposite the Y tram.

Turkish company with 34 years of experience in the world in construction and various fields such as: Offices, hotels, hospitals and hotels.

More than 85 projects in 18 countries in the world, such as Russia, Kazakhstan, Thailand, Dubai and Turkey.

Project details:

The project consists of 11 buildings, each building is isolated from the other, with a distance of 25 m to 37 m between one building and the other, and a width of 62 m to 71 m.

A private entrance and exit for each building, in addition to a reception service in each building.

Sound insulation in walls and glass  
Windows extending from floor to ceiling  
Floor heating  
Perfect utilization of space  
Each apartment has a balcony or independent garden  
Open-air cinema  
Fitness complete with all devices  
Reception + lobby  
Karaoke rooms + PlayStation  
Indoor pool and outdoor sand pool  
Terraces for each building (panoramic views)  
Valet service with charging points available in the parking lots  
Children's games  
Spaces designated for yoga  
A 42,000 m2 forest belonging to the project provides football fields, tennis and basketball courts.  
Protection service 7/24  
Mall contains 29 shops

**LUXURIOUS PROJECT IN BAHCELIEVLER / ISTANBUL**

**\$610,000**

---

(Includes international brands such as:

Big chief, Starbucks, Mado, English Home, Cloths Brand + Restaurants and Cafes)

It is only 3 km, 10 minutes away from the Marina Coast (Floria).

One of the most beautiful beaches, characterized by its large coastline and the purity of its waters, in addition to the presence of the largest park on the sea that provides swimming pools, restaurants, and cafes.

The surroundings are distinctive, residential and family par excellence, in addition to all services from hospitals, universities, schools, shopping centers and parks.

**Accessibility**

The tram and any walking distance is only one minute away.

M1 metro line, walking distance of only 8 minutes.

Metro Bus line is only a 10-minute walk away.

**About the project**

The total land area is 75,000 square meters, on which a commercial mall consisting of 29 shops has been built.

11 residential buildings with heights from 8 to 13 floors.

The mall's area is 75,000 square meters

The landscape area is 33,000 square meters

**Available residential units:**

2+1 American kitchen and a closed kitchen

3+1 American kitchen and a closed kitchen

4+1 with garden or high floors.

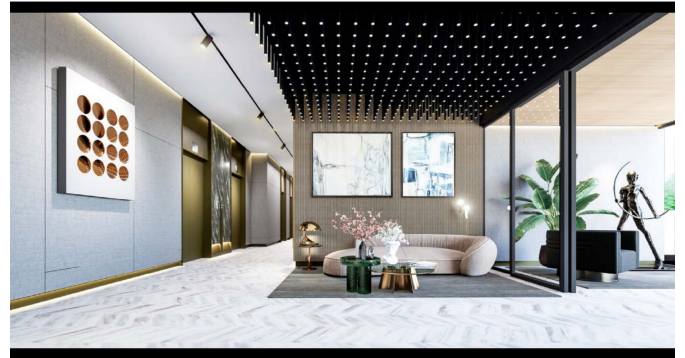
Duplex options are also available.

☐Suitable for obtaining Turkish citizenship

**Title deed fees 2%**

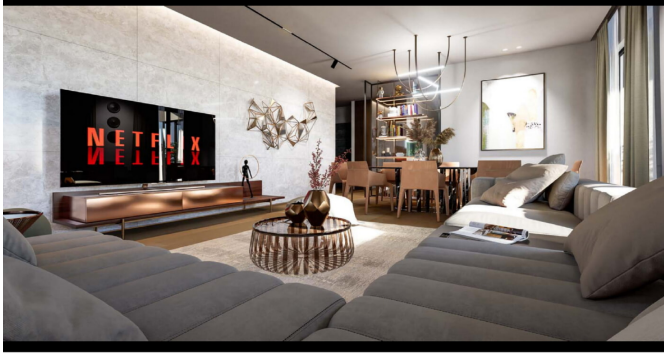
**Tax: 1%, ground floor options**





**LUXURIOUS PROJECT IN BAHCELIEVLER / ISTANBUL**

**\$610,000**



01	SALON	25,20 m <sup>2</sup>
02	MUTFAK	10,77 m <sup>2</sup>
03	ANTRE	6,30 m <sup>2</sup>
04	HOL	3,36 m <sup>2</sup>
05	YATAK ODASI 1	11,16 m <sup>2</sup>
06	EBV. YATAK ODASI	17,68 m <sup>2</sup>
07	EBV. BANYO	4,23 m <sup>2</sup>
08	GENEL BANYO	4,73 m <sup>2</sup>
<b>DAİRE NET ALAN</b>		<b>83,43 m<sup>2</sup></b>
09	BALKON	6,21 m <sup>2</sup>
<b>BALKON DAHİL NET ALAN</b>		<b>89,64 m<sup>2</sup></b>
<b>TOPLAM BRÜT ALAN</b>		<b>133,81 m<sup>2</sup></b>

