

FAMILY CONCEPT PROJECT IN BASAKSEHIR

\$230,000

Lot No: 164

Bathrooms: 1-2-3

Area (m2): 95-256 m2

Balconies: 1

Land Area (m2): 25000 m2

Terraces: 1

Bedrooms: 4

Number of Floors: 10

Property Features;

Balcony	Parking	Smart House
Swimming Pool	Air Conditioning	Park
Satellite TV	Terrace	Signaling
Elevator	Appliances	Concierge
Sauna		

Description;

The project homes have been developed with horizontal architecture on a 39,000 m² land area. The project includes 1+1, 2+1 types in residential blocks while 2+1, 3+1, 4+1 family blocks for large families. 453 apartments for sale offered in the project have different square meters for different lifestyles. You can have more information about the flats for sale, payment plans, and floor plans in the project by sending a form.

80% of the Project Surrounded by Green Areas

The project offers a natural and green life for homebuyers who want to buy a house in Istanbul. In the project, which faces the biggest botanical park in Europe, houses viewing lush green areas draw attention. Most importantly, 80% of the project is surrounded by green areas.

3. Istanbul Valley in The Project

The project houses for sale provide the opportunity to live in one of the most important locations of Istanbul. It also offers social opportunities that impress due to the Third Istanbul Valley. In the project, modern and large social living spaces attract the attention of big families and home buyers who value their social life.

In addition to the comfortable living areas within the scope of the project residences for sale are waiting for you to add value to your life. Indoor and outdoor swimming pools, sauna, fitness center, 24/7 security and many other facilities are the main features of the project.

Europe's Biggest Healthcare Complex Is Right Next to You

Basaksehir Cam Sakura State Hospital is the largest health complex in Europe and is located right across this unique housing project. So, it will allow you to easily access health services. Cam Sakura Hospital has services in 107 branches and surgery rooms with 500 features. Furthermore, another

FAMILY CONCEPT PROJECT IN BASAKSEHIR**\$230,000**

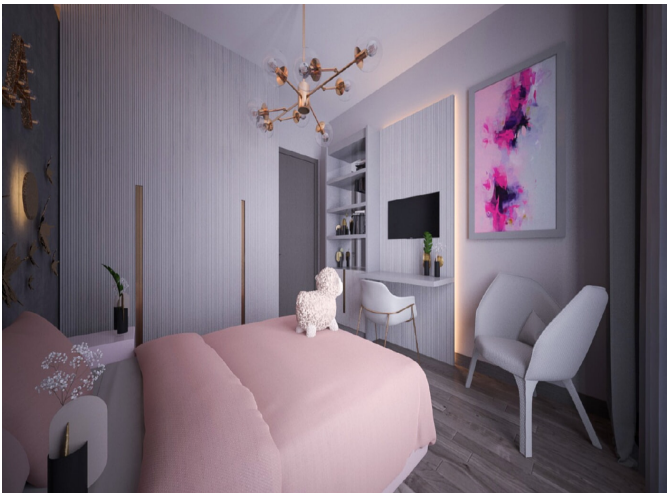
remarkable feature of the health complex stands out as the heliports and big parking areas for 8,134 vehicles. Horizontal architectural living spaces promise maximum earthquake safety. The project draws the attention of people who want to benefit from health services and hospital health workers.

Located Close to Istanbul Airport and Istanbul Canal!

Basaksehir is close to the most important link roads and locations, as well as the health and education complexes around it. It has a location where you can easily reach hospitals, schools and many other facilities. The project is adjacent to Ibn Haldun University and Istanbul Airport. The project is constructed at the heart of trade and offering strong investment opportunities. So, you can easily reach the hotels, shopping centers, city square and transportation vehicles that will allow you to reach the city center in no time.

Moreover, the project is close to metro, Istanbul Airport, Istanbul Canal and Northern Marmara Motorway link roads. The project stands out with its valuable location features on the European Side of Istanbul while offering strong investment opportunities.



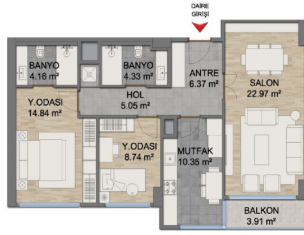




2+1 E

GİRİŞ HÖLD	6.37 m²
SALON	22.97 m²
MUTFAK	10.36 m²
YATAK ODASI	8.74 m²
E.YATAK ODASI	14.84 m²
E.BANYO	4.33 m²
BANYO	4.33 m²
HOL	5.05 m²
BALKON	3.91 m²

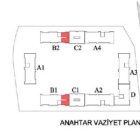
NET ALAN	76.81 m²
NET ALAN(balkon dahil)	80.72 m²
BRÜT ALAN	92.95 m²
SATILABİLİR ALAN	112.38 m²
DEPO	3.00 m²



2+1 E.T1

GİRİŞ HÖLD	6.37 m²
SALON	22.97 m²
MUTFAK	10.36 m²
YATAK ODASI	8.74 m²
E.YATAK ODASI	14.84 m²
E.BANYO	4.33 m²
BANYO	4.33 m²
HOL	5.05 m²
ZEMİN TERASI	19.77 m²

NET ALAN	76.81 m²
BRÜT ALAN	88.72 m²
SATILABİLİR ALAN	107.85 m²
TANISILIR TERAS	19.77 m²
DEPO	3.00 m²



3+1 A

GİRİŞ HÖLD	7.01 m²
SALON	31.22 m²
MUTFAK	13.24 m²
YATAK ODASI	10.14 m²
E.YATAK ODASI	9.88 m²
E.YATAK ODASI	18.93 m²
E.BANYO	4.00 m²
BANYO	4.14 m²
HOL	5.94 m²
ÇAMAŞIR ODASI	1.30 m²
BALKON	6.28 m²

NET ALAN	105.80 m²
NET ALAN(balkon dahil)	112.08 m²
BRÜT ALAN	127.28 m²
SATILABİLİR ALAN	154.72 m²
DEPO	3.00 m²



3+1 A.T2

GİRİŞ HÖLD	7.01 m²
SALON	31.22 m²
MUTFAK	13.24 m²
YATAK ODASI	10.14 m²
E.YATAK ODASI	9.88 m²
E.YATAK ODASI	18.93 m²
E.BANYO	4.00 m²
BANYO	4.14 m²
HOL	5.94 m²
ÇAMAŞIR ODASI	1.30 m²
BALKON	6.28 m²
ÇATI TERASI	25.56 m²

NET ALAN	105.80 m²
NET ALAN(balkon dahil)	112.08 m²
BRÜT ALAN	127.28 m²
SATILABİLİR ALAN	154.72 m²
TANISILIR TERAS	25.56 m²
DEPO	3.00 m²

