

**HIGH RENTAL INVESTMENT PROJECT IN KUCUKCEKMECE/ISTANBUL****\$155,000****Lot No:** 177**Bathrooms:** 1-2**Area (m2):** 64 - 145 m2**Balconies:** 1**Land Area (m2):** 21228 m2**Distance to Airport:** 37KM**Bedrooms:** 1**Property Features;**

Sauna	Concierge	Appliances
Elevator	Signaling	Balcony
Parking	Smart House	Swimming Pool
Air Conditioning	Park	Satellite TV

**Description;**

Located on the Küçükçekmece E-5 line, this project is right next to the E-5 Highway, one of the most valuable points of Istanbul. The project, which offers a privileged life with its social life units in one of the most prestigious points of the city, was prepared for the needs of the region. Built on an area of 23.000 m<sup>2</sup>, the project consists of 3 blocks, 498 residences, 220 offices and 52 stores.

Although it is the newest project of the Küçükçekmece E-5 line, it is located in one of the most valuable points of Istanbul, right next to the E-5 Highway. The project, which provides easy access to Atatürk Airport, Exhibition Center, Basın Ekspres road, 2nd and 3rd Bridge connection roads, as well as the 3rd Airport, is among the favorite projects of real estate investors with the privileges it offers.

Located 1 minute from Basın Ekspres, E5, Metrobus, metro station and 3 minutes from Atatürk Airport, the project is surrounded by many universities, hospitals and shopping centers.

**About the project**

The project, which offers a privileged life with its eye-catching architecture and social life units, was prepared for the needs of the region. Constructed using the best principles of architectural design in order to move away from architectural stereotypes and give the project an increased privacy character, the blocks of the project project are designed similar to the hotel design, and the buildings are covered with glass so that sunlight enters the project and benefits from natural lighting.

The giant building, consisting of three different units as residence, office and store, has been designed in such a way that you can reach everything you need in one step, without leaving the living area, thanks to this privilege. The project, which stands out with the wide green areas surrounding and inside the project, as well as the view of the Marmara Sea and Küçükçekmece Lake, consists of 3 blocks, 498 residences, 220 offices and 52 stores on a 23.000 m<sup>2</sup> land area.

There are offices in B Block, residence and home offices in C Block. Block A has an area of 5000 m<sup>2</sup> and is used as a 13-floor courthouse. C block consists of 2 different types as 1+1 and 2+1. The project has

**HIGH RENTAL INVESTMENT PROJECT IN KUCUKCEKMECE/ISTANBUL**

**\$155,000**

---

Istanbul municipality garden, Central Park and outer garden.

**Hospitals in the area:**

Elite Istanbul Hospital: 6 min  
Medical Park: 8 min  
Memorial: 9 min  
Acibadem Hospital: 15 minutes

**Educational institutions in the region:**

Kultur University: 3 min  
Istanbul Arel University: 6 min  
Aydın University: 7 min  
Istanbul Altinbas University: 10 min

**Shopping centers in the area:**

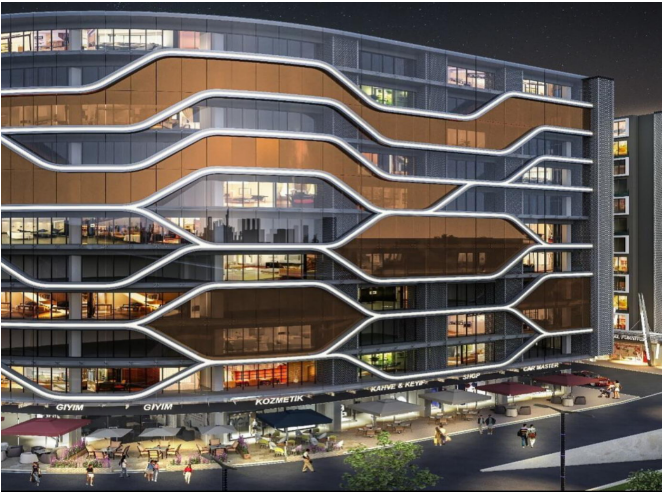
Star City Outlet: 5 min  
Airport Mall: 5 minutes  
212 Outlet Mall: 10 min  
Mall Of Istanbul: 15 min

**Transportation and other amenities:**

Metrobus stop: 1 min  
Bus stop: 1 min  
Metro stop: 5 min  
Beach Line: 8 min  
Ido Ferry: 20 min  
Taksim: 20 min  
Istanbul Airport: 30 min

**HIGH RENTAL INVESTMENT PROJECT IN KUCUKCEKMECE/ISTANBUL**

**\$155,000**





## HIGH RENTAL INVESTMENT PROJECT IN KUCUKCEKMECE/ISTANBUL

\$155,000



**HIGH RENTAL INVESTMENT PROJECT IN KUCUKCEKMECE/ISTANBUL**

**\$155,000**

